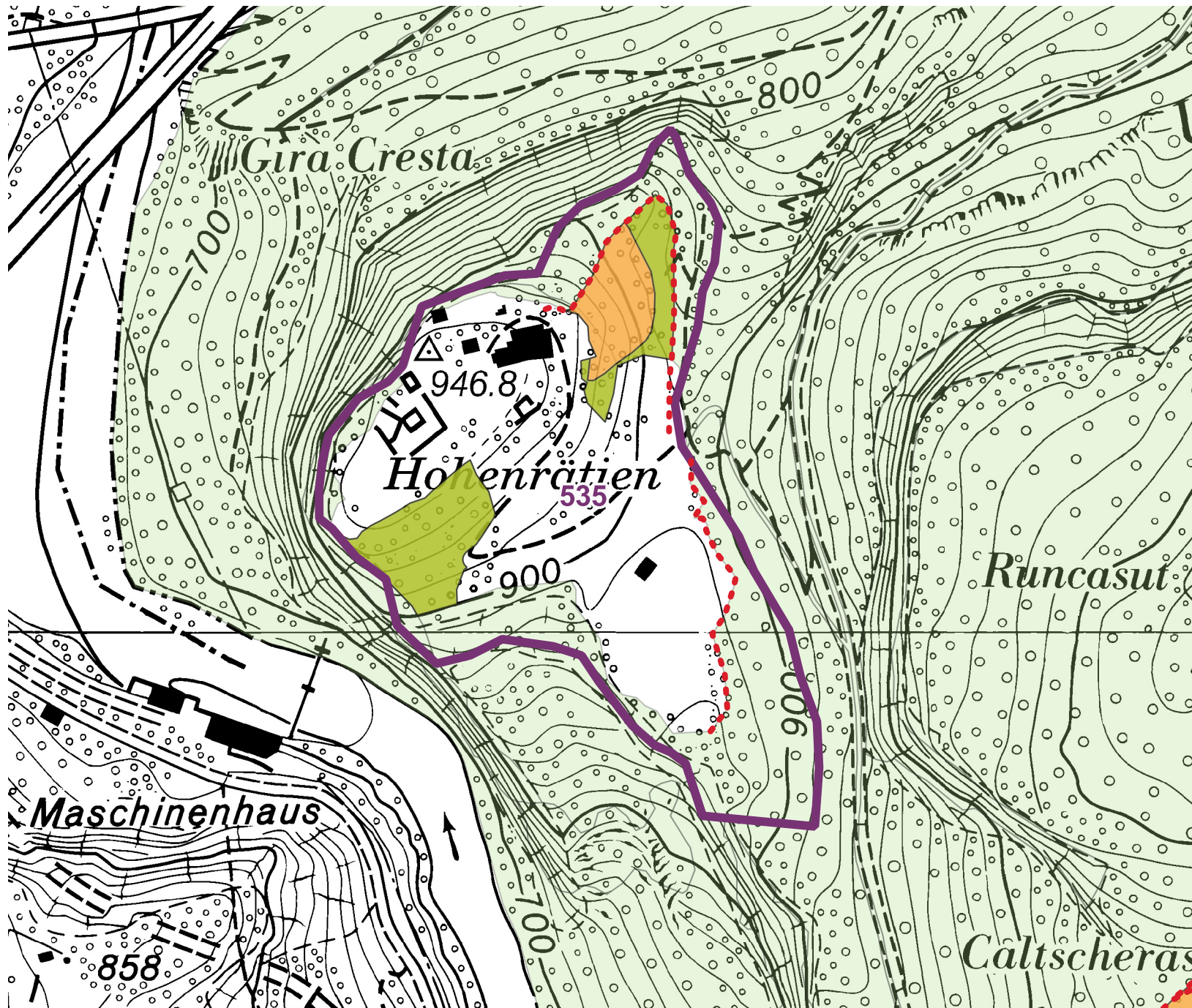







# Vorschlag Waldweideregulation Sils i.D., 2025



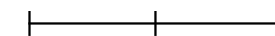
## Waldweideregulation Grundstück

-  Weide bestockt, Wald mit vorrangiger Beweidung
-  Wald mit tolerierter Beweidung
-  Waldumriss, generelles Weideverbot
-  Weidezäune
-  Parzellen



1:3'000

0 50 100 m



Geodaten: © swisstopo,  
AWN Graubünden Region 4